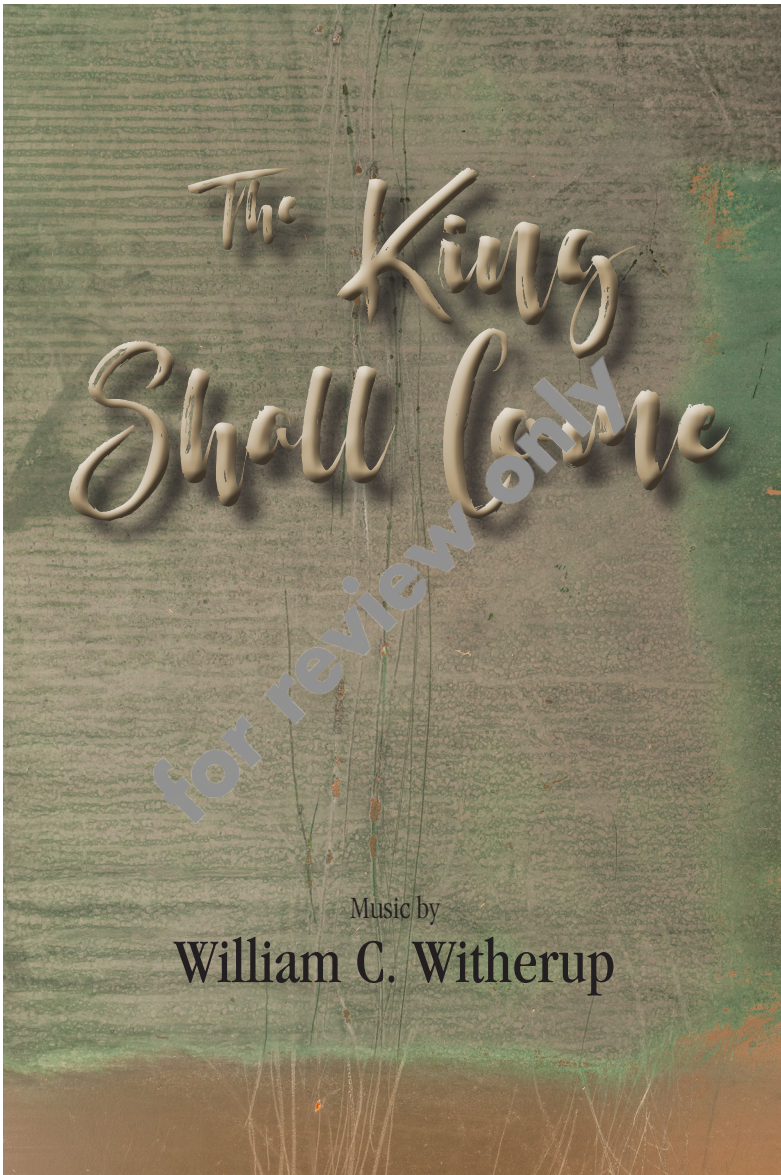


405-175

**The King Shall Come**  
SATB, organ, and opt. handbells

William C. Witherup



# The King Shall Come

William C. Witherup • 405-175 • Selah Publishing Co., Inc.

Order from your favorite dealer or at [www.selahpub.com](http://www.selahpub.com) (Or call 800-852-6172 in the U.S. and Canada)

This document is provided for review purposes only. It is illegal to photocopy this music.

# The King Shall Come

William C. Witherup • 405-175 • Selah Publishing Co., Inc.  
Order from your favorite dealer or at [www.selahpub.com](http://www.selahpub.com) (Or call 800-852-6172 in the U.S. and Canada)  
This document is provided for review purposes only. It is illegal to photocopy this music.

2

## The King Shall Come

SATB, organ, opt. handbells

John Brownlie, tr. from the Greek, 1907

MORNING SONG, Southern folk hymn, arr. William Witherup

S.A. Unison *mf*

T.B. Unison *mf*

*f*

Man.

5 King shall come when— morn - ing— dawns and light tri - um - phant breaks; when—

9 beau - ty— gilds the eas - tern— hills and life to joy— a - wakes.

Organ Fl. 8'

The

Copyright © 2018 Selah Publishing Co., Inc. [www.selahpub.com](http://www.selahpub.com)  
Printed in the U.S.A. on recycled paper. *It is illegal to photocopy this music.*

# The King Shall Come

William C. Witherup • 405-175 • Selah Publishing Co., Inc.

Order from your favorite dealer or at [www.selahpub.com](http://www.selahpub.com) (Or call 800-852-6172 in the U.S. and Canada)

This document is provided for review purposes only. It is illegal to photocopy this music.

13 Unison S.A. *mp* 3

Not,

Oboe

Celeste (Handbells)

17 as of old, a lit - tle child to be, and fight, and die, But —

Fl. 4' *mp*

21 crowned with glo - ry like the sun that lights the morn - ing

*p*

# The King Shall Come

William C. Witherup • 405-175 • Selah Publishing Co., Inc.  
Order from your favorite dealer or at [www.selahpub.com](http://www.selahpub.com) (Or call 800-852-6172 in the U.S. and Canada)  
This document is provided for review purposes only. It is illegal to photocopy this music.

4

24

sky.

Bells out

Prin. 8' (*dolce*) *mf*

Sw. 8', 4'

29

T.B. Unison *mf*

The King shall come when—morn—ing—dawn and earth's dark night is

*mp* 8', 4'

Ped.

33

past; O— haste the— ris— ing of that— morn, the day that aye— shall *div.*

# The King Shall Come

William C. Withrup • 405-175 • Selah Publishing Co., Inc.

Order from your favorite dealer or at [www.selahpub.com](http://www.selahpub.com) (Or call 800-852-6172 in the U.S. and Canada)

This document is provided for review purposes only. It is illegal to photocopy this music.

5

S. *mp*

A. *mp* And

T. *mp* And

B. *mp* And

last; last; last;

Fl. 8' Oboe

42

let the end - less — bliss be - gin, by wea - ry saints fore - told, when —

let the end - less — bliss be - gin, by wea - ry saints fore - told, when

let the end - less — bliss be - gin, by wea - ry saints fore - told, when

let the bliss be - gin, by saints fore - told, —

# The King Shall Come

William C. Witherup • 405-175 • Selah Publishing Co., Inc.  
Order from your favorite dealer or at [www.selahpub.com](http://www.selahpub.com) (Or call 800-852-6172 in the U.S. and Canada)  
This document is provided for review purposes only. It is illegal to photocopy this music.

6

46

right shall triumph over wrong, and truth shall be ex-tolled.

right triumph over wrong, and truth shall be ex-tolled.

right triumph over wrong, and truth shall be ex-tolled.

right shall triumph and truth ex-tolled.

50

Sop. descant *f*

All other voices *f*

The

The

*f* *mf*

Ped.

# The King Shall Come

William C. Witherup • 405-175 • Selah Publishing Co., Inc.

Order from your favorite dealer or at [www.selahpub.com](http://www.selahpub.com) (Or call 800-852-6172 in the U.S. and Canada)  
This document is provided for review purposes only. It is illegal to photocopy this music.

7

54

King shall come and beauty bring: hail,  
King shall come when-morning-dawns and light and beauty brings: hail,—

Ped.

58

Christ the Lord come King of Kings. Come  
Christ the Lord! Thy people pray, come quickly, King of Kings. Come

62

quickly, King of Kings!  
quickly, King of Kings!

*f* +16' +32'

# The King Shall Come

William C. Witherup • 405-175 • Selah Publishing Co., Inc.  
Order from your favorite dealer or at [www.selahpub.com](http://www.selahpub.com) (Or call 800-852-6172 in the U.S. and Canada)  
This document is provided for review purposes only. It is illegal to photocopy this music.

8

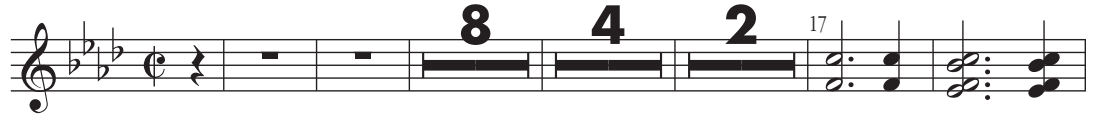
## The King Shall Come

Handbells

Bells Used: 18

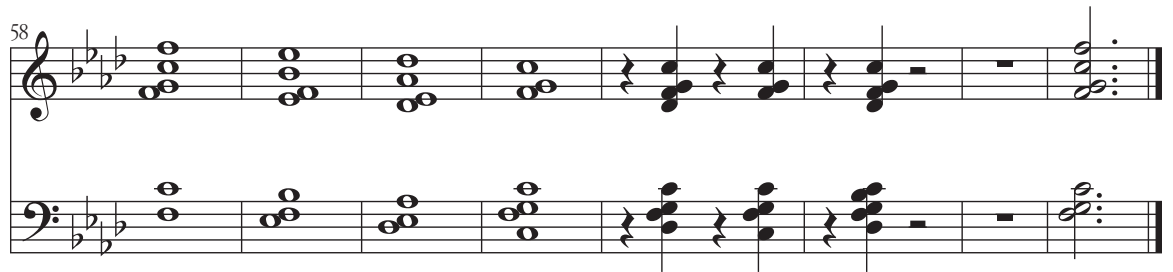


Southern folk hymn, arr. William Witherup



+Bells \*

\* tower swings on beats 2 & 3



Copyright © 2018 Selah Publishing Co., Inc. [www.selahpub.com](http://www.selahpub.com)  
Printed in the U.S.A. on recycled paper. It is illegal to photocopy this music.